



UNION  
SQUARE

# ONE UNION SQUARE

SUITE

2100

RSF

18,911

CONTACT

**Mark Barbieri**

Executive Vice President  
206-613-5316  
mbarbieri@waholdings.com

**Tim Holt**

Senior Vice President  
206-613-5330  
tholt@waholdings.com

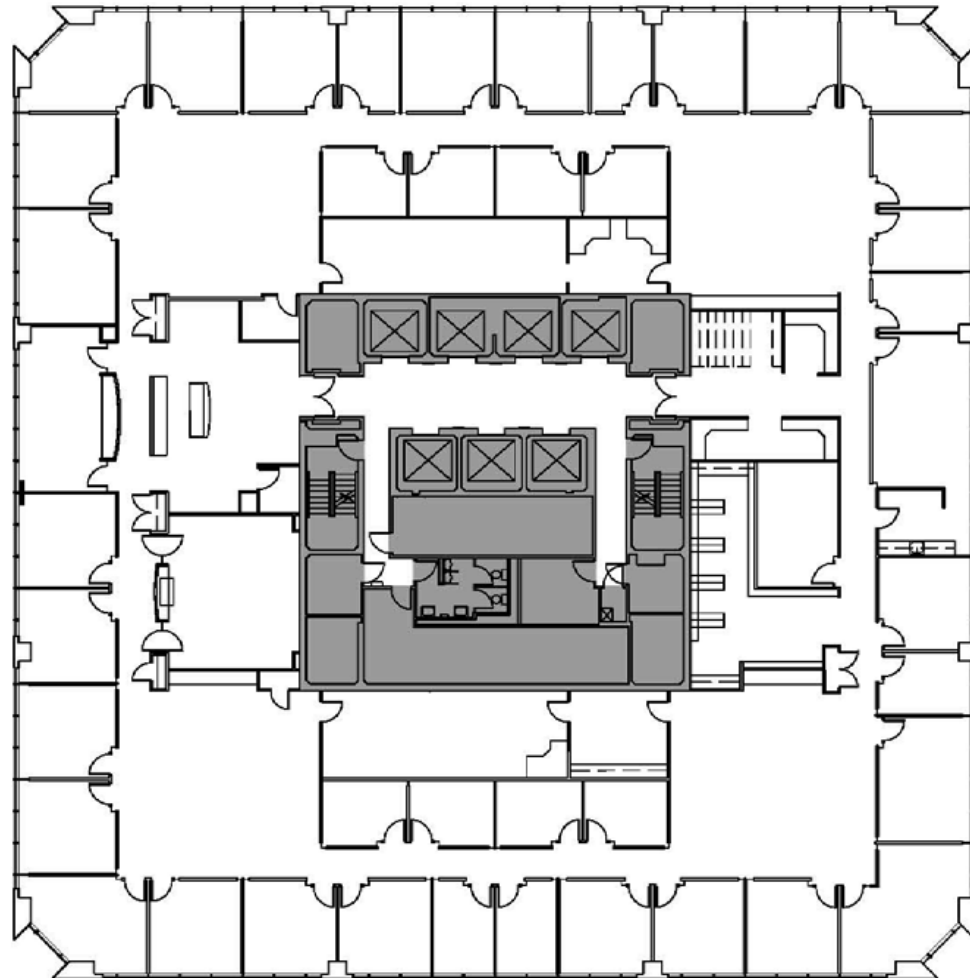
**Mick Newell**

Senior Leasing & Property Manager  
206-613-5318  
mnewell@waholdings.com

Proudly Managed by



N



3D TOUR

PROPERTY TOUR