



UNION
SQUARE

ONE UNION SQUARE

SUITE

2100

RSF

18,911

CONTACT

Mark Barbieri

Executive Vice President
206-613-5316
mbarbieri@waholdings.com

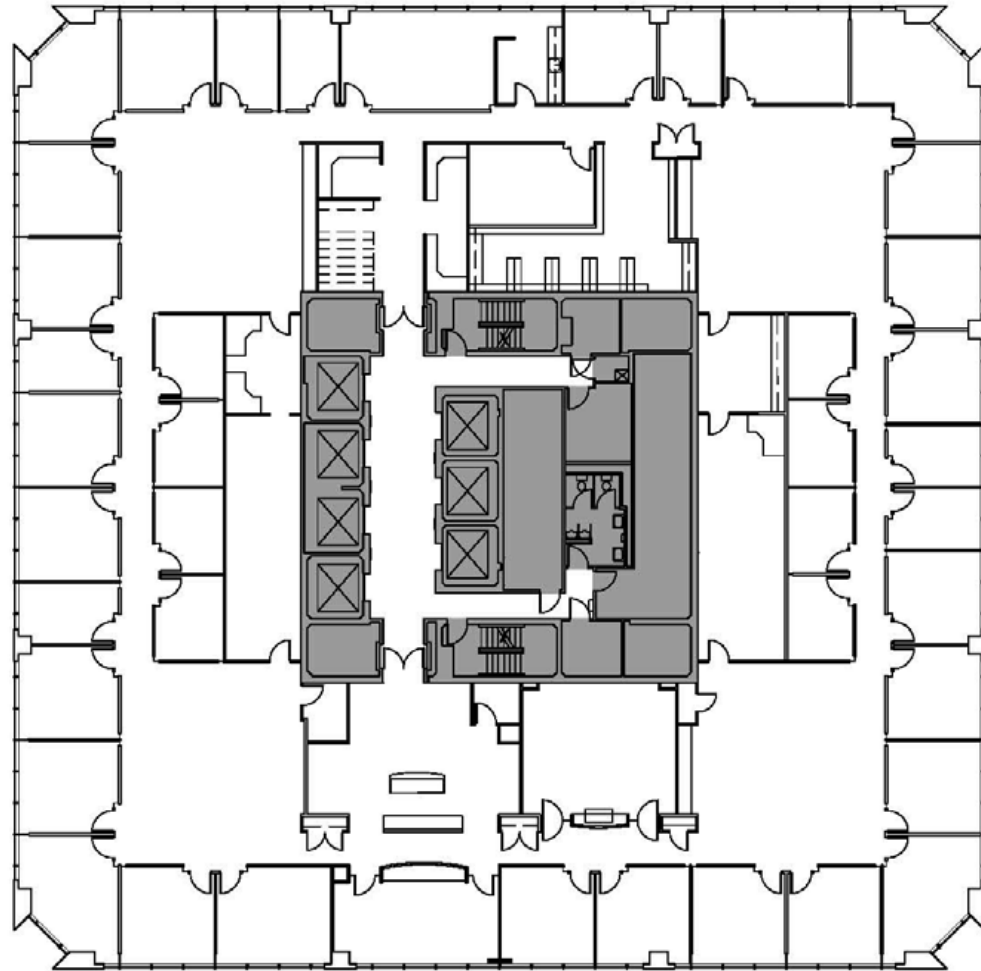
Tim Holt

Senior Vice President
206-613-5330
tholt@waholdings.com

Mick Newell

Senior Leasing & Property Manager
206-613-5318
mnewell@waholdings.com

Proudly Managed by



[3D TOUR](#)

[PROPERTY TOUR](#)