



UNION  
SQUARE

# ONE UNION SQUARE

SUITE

2200

RSF

13,065

CONTACT

**Mark Barbieri**

Executive Vice President  
206-613-5316  
mbarbieri@waholdings.com

**Tim Holt**

Senior Vice President  
206-613-5330  
tholt@waholdings.com

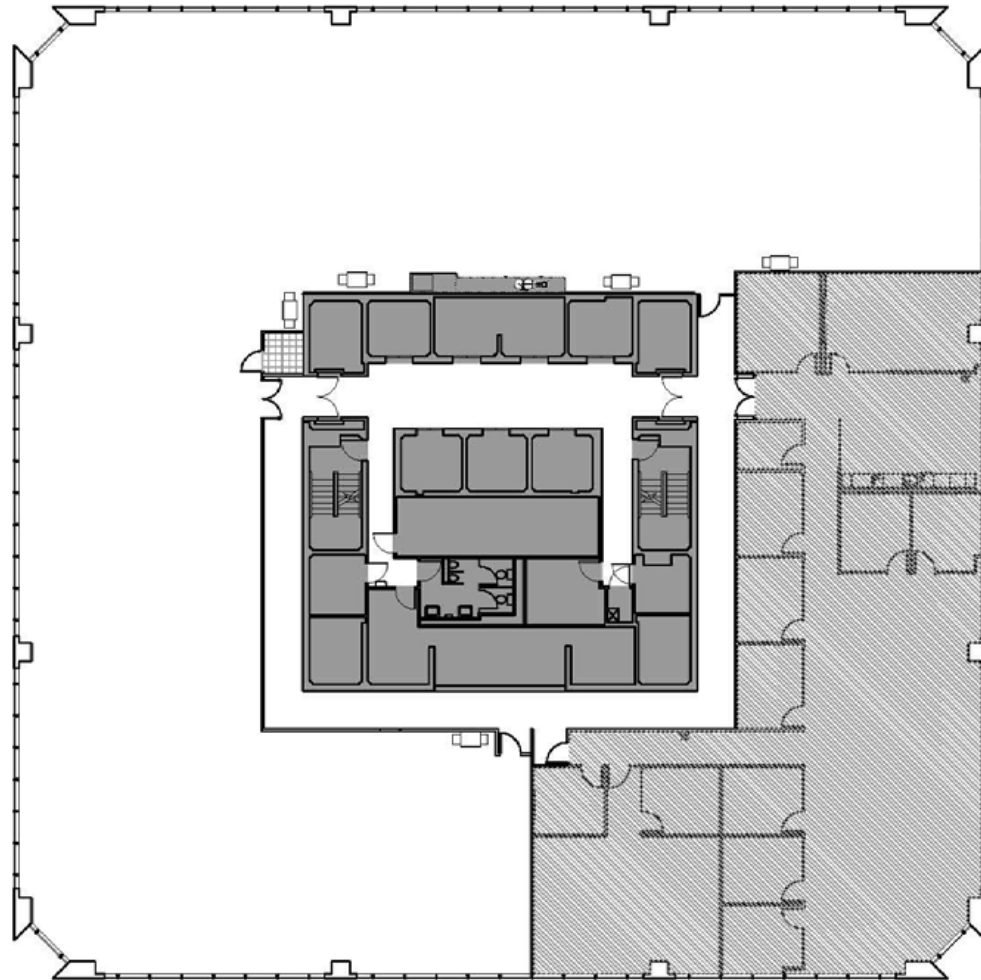
**Mick Newell**

Senior Leasing & Property Manager  
206-613-5318  
mnewell@waholdings.com

Proudly Managed by



N



[3D TOUR](#)

[PROPERTY TOUR](#)